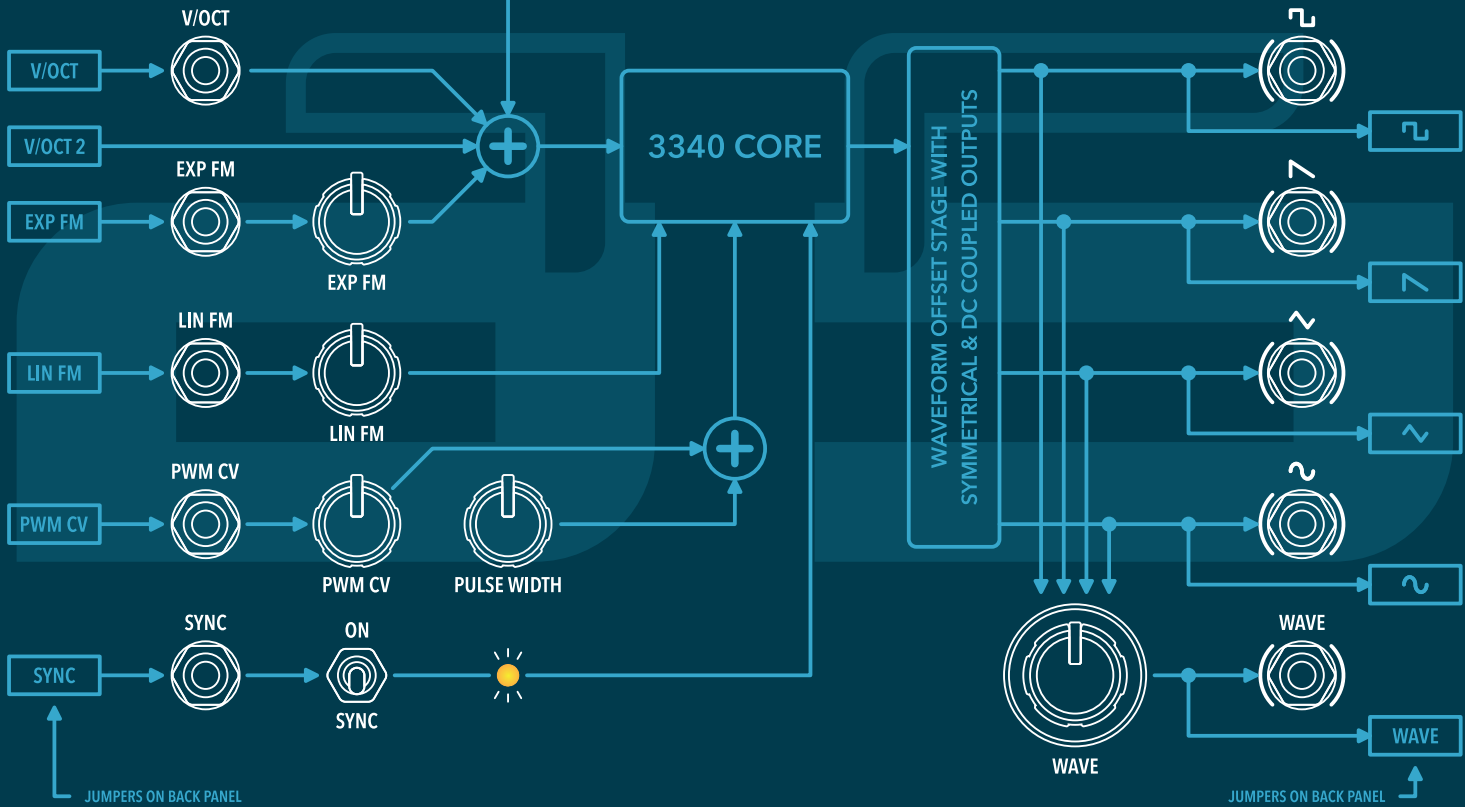
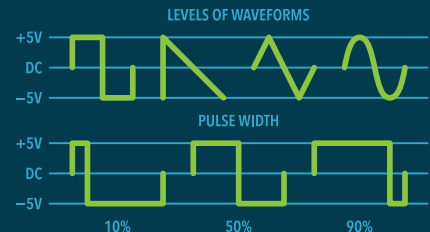
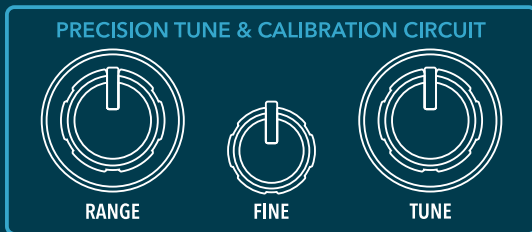


**BLOCK DIAGRAM OF
VCO**
AS101
100% ANALOG MODULE



FRONT PANEL OF VCO

AS101

100% ANALOG MODULE

1. V/OCT CV IN *
2. Exponential FREQ CV IN
3. Linear FREQ CV IN
4. Pulse width modulation CV IN
5. SYNC IN **
6. SQUARE WAVE OUT
7. SAW WAVE OUT
8. TRIANGLE WAVE OUT
9. SINE WAVE OUT
10. Selectable WAVE OUT
11. EXP FM DEPTH, range: 0-100%
12. LIN FM depth, range: 0-100%
13. PWM depth, range: 0-100%
14. PULSE WIDTH, range 10% to 90%
15. WAVEFORM selector



16. FINE TUNE potentiometer, range: b to #
17. RANGE SELECTOR rotary switch, range: 16': -1oct, 8': center, 4': +1oct, 2': +2oct
18. COARSE TUNE potentiometer, range: 24 notes (-/+12notes), continuous
19. SYNC on/off switch
20. SYNC enable indicator

All waveform outputs are symmetrical and DC coupled. Output levels: 10Vpp

All CV inputs range: -5V to +5V, or -10V to +10V.

* Recommended for V/OCT: 0V to +10V

** To SYNC IN it's recommended to use SAW WAVE

BACK PANEL OF VCO

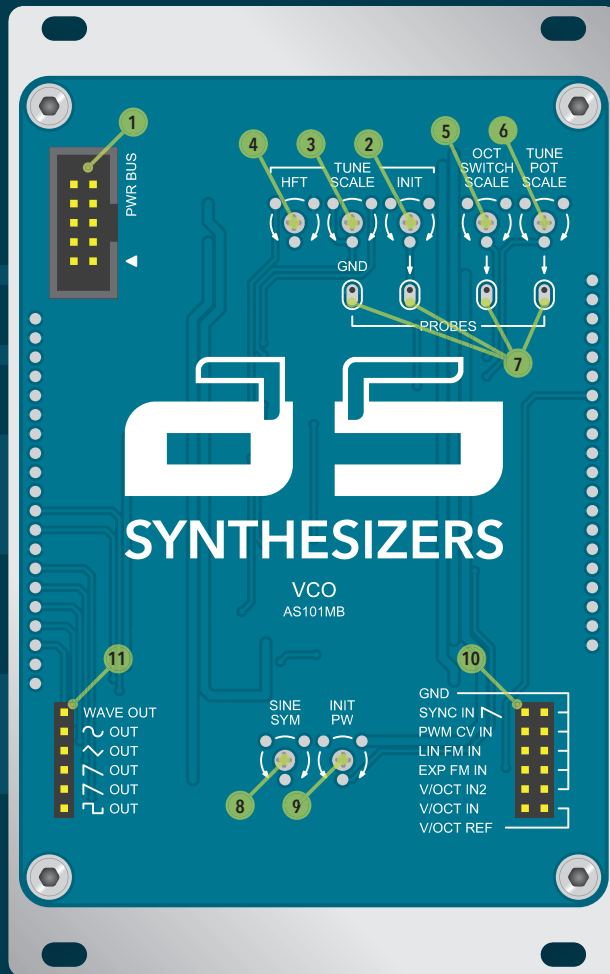
AS101

100% ANALOG MODULE

1. Power bus connector IDC10
2. Initial tune
3. V/OCT scale trim
4. High freq trim
5. Octave switch scale
6. Tune potentiometer scale
7. Multimeter probe pins
8. Sine wave symmetry trim
9. Initial pulse width trim
10. CV & Sync inputs from internal rails

When no use of input pins, connect jumper between input and GND also between V/OCT IN and V/OCT REF pins

11. Waveform outputs to internal rail
Do not use jumpers on output pins, also do not connect to ground or power rails!



SPECIFICATION:

- Module depth: 33mm
- Module width: 16HP (80.4mm)
- Module weight: 210g
- Connector type: 10P IDC Eurorack
- Power consumption:
+12V / 60mA & -12V / 40mA
- Audio outputs: HQ Analog
- Audio outputs range: 10Vpp
- CV inputs: 0V to +10V or -5V to +5V

